

# Bonnie, MAT and MADiE User Group



## ***June User Group***

*Hosted by:*

*ICF*

*June 15, 2023*

# Disclaimer

This meeting is being recorded to ensure notes and action items are captured accurately.

Attendees who have objections to the meeting being recording are asked to let the facilitator know at this time.

# Agenda and Objectives

## Agenda

1. MAT Updates
2. Bonnie Updates
3. MADiE Updates
4. Community Questions & Discussion
5. Review of Resources

## Objectives

- Inform MAT, Bonnie and MADiE users of current and planned activities
- Create a forum to gather community feedback on future enhancements
- Foster Collaboration through open community discussion

# Measure Authoring Tool

---

## MAT 6.10 QDM & FHIR

# Measure Authoring Tool: Current State

## MAT 6.10

- MAT 6.10
- Maintenance release occurred on 11/16/22
- Release Notes are available on the MAT web site under Training and Resources - contains additional information about what information will be transferred based upon measure type.
- QDM measures continue to use version 1.5.3 of the CQL-ELM translator.
- FHIR measures continue to use version 1.5.4 of the CQL-ELM translator.

# Measure Authoring Tool

## Maintenance:

- Maintenance is usually zero down time.
- Any known downtime for maintenance will be communicated to all users via email.

## Upcoming Release:

- Late June/Early July MAT 6.11 will be released
  - This will include the following updates:
    - Updated to version 2.10 of the CQL-ELM translator
    - Rename the Supplemental Data Element Defaults for all new measures from "Payer" to "Payer Type"
    - Updated NQF to CBE

# Measure Authoring Tool – Known Issues

## Known Issues:

1. For FHIR measures, when the same CQL definition is used in Supplemental Data Elements (SDE) and as a Risk Adjustment Variable (RAV), the measure is not able to be packaged. Users will receive an error for 'duplicate id value'. The workaround is to create different definition(s) when they are needed in both SDE and RAV. ([BonnieMAT-1212](#))
2. For FHIR measures, if the CQL Editor is used to enter value sets, the value sets are validated each time the CQL is saved. If the value set name and OID are not a match to the VSAC a CQL error will display and users may update the value set directly in the editor. When using the CQL Editor the 'Update from VSAC' button should not be used as this will display an 'Unable to Process' error message. This message does not prevent users from completing or saving work. They should continue to save their CQL to validate value sets in VSAC. ([BonnieMAT-1235](#)).

# Bonnie

---

**Bonnie 4.3.1 QDM (Prior)**

**Bonnie 5.1.2 QDM**

**Bonnie 6.2.5 FHIR**



# Bonnie Prior: Current State

## Bonnie 4.3.1 Prior

- Supports QDM 5.5
- Users will receive a warning after 10 minute of inactivity and logged out after 15 minutes
- Bonnie 4.3.1 Prior maintenance release on 7/19/22

# Bonnie QDM: Current State

## Bonnie 5.1.2 QDM

- Bonnie 5.1.2 QDM maintenance release on 7/19/22
- Supports QDM 5.6
- Supports QDM/CQL and CQL 1.5
- Patient conversion functionality will remain disabled

## Bonnie 5.1.3 QDM - Mid July

- Updating CQM-Execution to 4.1.2
  - Fixes Ratio Measure issues

# Bonnie FHIR: Current State

## Bonnie 6.2.5 FHIR

- Bonnie 6.2.5 FHIR released on 12/13/22

## Bonnie FHIR Attributes

- Attributes supported by Bonnie FHIR are linked on the Bonnie and MAT issue tracker on the summary page
- <https://oncprojecttracking.healthit.gov/support/projects/BONNIEMAT/summary>

# Bonnie

## Known Issues:

- The QRDA export is not correctly reflecting relevant date time. There is no workaround. We don't have plans to address this in Bonnie at this time.
- For Bonnie FHIR, measures that include stratification are not displaying properly for users to test. There is no workaround at this time. We don't have plans to address this in Bonnie at this time.
- For Bonnie QDM, if the result of any CQL aggregate functions, such as Count, Min, Max, Average, etc., is 0, then Bonnie currently displays 'No Result Calculated'. The Execution Engine is producing the correct results. This is a display issue only. We don't have a planned release to address this in Bonnie at this time. ([BONNIEMAT-1096](#))
- For Bonnie QDM, when measure observations are used in ratio measures, the measure observation logic is being executed against test cases, even if that test case did not first meet the numerator or denominator criteria. When measure logic cannot be modified, there is no workaround. This will affect the pass rate of the measure. There are not plans to address this in a future release. ([BONNIEMAT-1106](#))
- For Bonnie QDM, the CQM Model used in Bonnie does not currently support the 'is' operator when it is referencing any 'entity', which can include practitioner, patient, organization care partner or location. Logic may be able to be altered as a workaround. ([BONNIEMAT-1158](#))

# Bonnie (continued)

## Known Issues (continued):

- For Bonnie Prior, test cases that include certain QDM attributes are preventing test case conversion from QDM to FHIR. The QDM attributes are PatientEntity, CarePartner, Practitioner and Organization. A workaround of removing these QDM attributes will allow the conversion to process. ([BONNIEMAT-1177](#))
- Bonnie currently uses version 4.0.2 of the Execution Engine. In this version, there are issues with appropriate handling of timezone offsets. This has been corrected in current versions of the Execution Engine and we are working with CMS and stakeholders to understand the priority of updating Bonnie QDM. ([BONNIEMAT-1252](#)) and ([BONNIEMAT-1259](#))
- For Bonnie QDM, when creating a test case with Diagnostic Study, Performed, users are not able to add the facilityLocation attribute. ([BONNIEMAT-1365](#))
- For Bonnie FHIR, the defaulted element/code combination for Malignant Intracranial Neoplasm (SNOMEDCT Code 109911004) prevents the user from saving the test case. If the code is updated to another SNOMEDCT code for this element, the test case can be saved and can, if desired, revert back to the defaulted SNOMEDCT Code 109911004 and not be prevented from saving the Test Case. ([BONNIEMAT-1485](#))

# 60 Day Account Deactivation

## **Keeping your MADiE, MAT and Bonnie Accounts Active:**

- In accordance with CMS and HHS security requirements, these tools have implemented an account deactivation policy for all users who have not logged in within the previous 60 days or more.
  - Activity in at least one of the three Bonnie environments (every 60 days) is needed to keep accounts active.
- Users will receive warning messages after 30 days of inactivity.
- After 60 days of inactivity, accounts will be deactivated.
- To access deactivated MAT accounts again, users will need to request reactivation of their account by contacting the Help Desk.
- To access deactivated Bonnie accounts again, users will need to request reactivation of their account by contacting the Help Desk.
- To access a deactivated MADiE account again, users will need to request the MADiE role in HARP.

\*Keep your Bonnie, MAT and MADiE accounts active to continue to receive important email communications!

# Bonnie and MAT: Future State

## **Bonnie and MAT Support:**

- As outlined above, Bonnie QDM and MAT will be updated with features needed to support using them for the 2024 Annual Update.
- Bonnie and MAT will continue to be available following the release of MADiE.
- While it is the intention to sunset these tools in the future, no date has been set at this time.

## **All future MAT and Bonnie enhancements or updates will be evaluated for:**

- Priority – Is it needed to support CMS contracted measure development work? Does it correct an issue?
- Level of Effort – Does this impact the delivery of future releases of MADiE?
- Benefit – Can users complete their work with or without the enhancement?
- Future MAT or Bonnie releases will be communicated to users during User Group, community and stakeholder meetings and via email communication.

# MADiE

---

MVP 1.1.6



# MADiE Release Timelines



## **MADiE – 1.1.5 6/1/2023 Release**

- Addresses sharing privileges while versioning
- QDM measure and Population Criteria creation
- Meta.profile warning messages appear with blue background



## **MADiE – 1.1.6 6/14/2023 Release**

- Updated to latest LiquidBase Templates
- Update to use FQM-Execution 1.1.0
- Supplemental Data and Risk Adjustment tabs have been updated to include only one description

## **MADiE – 1.1.7 Late June/Early July**

- MAT -> MADiE QDM Measure Transfer
- Updating CQL-to-ELM Translator to version 2.10.0
- Adding support for Help Desk measure ownership transfer

## **MADiE – Upcoming Releases**

- QDM Data Model Support
- QDM Measure, library and test case support
- Test Case Export

## **MADiE Release Schedule:**

- MADiE releases will occur approximately every two weeks.
- Goal: Provide users with frequent delivery of high-quality features and correction of defects.
- Users will be notified via email and Release Notes will be made available on the [MADiE MVP tab](#) of the MAT public web site.

# MADiE Known Issues

## **Known Issues as of 6/14/23:**

Known Issues List will be posted and maintained on the [MADiE MVP tab](#) of the MAT public web site and the Summary page of the Bonnie MAT MADiE ONC Jira Issue Tracker here:

<https://oncprojecttracking.healthit.gov/support/projects/BONNIEMAT/summary>

## **CQL-to-ELM Translator Known Issues**

There is an issue in how reasonCode is getting mapped to ELM for the CommunicationNotDone datatype in QI-Core 4.1.1. Refer to the following GitHub ticket for more information on this issue:

[https://github.com/cqframework/clinical\\_quality\\_language/issues/1153](https://github.com/cqframework/clinical_quality_language/issues/1153) [BONNIEMAT-1420](#)

# MADiE Known Issues (continued)

## MADiE Known Issues as of 6/14/23:

- CQL Validation issues occur when a definition name is resolvable to a quoted identifier, but the definition name is not in quotations. Users may not receive CQL validation errors, however the Population Criteria section won't render, and a blank screen will display
  - Work around: Quotes should be added to all define statement names, even when resolvable to a quoted identifier.
- When users search for measure names and include special characters in the search criteria, the user may receive a 403 error, or the search results will not be returned.
  - Work around: Only include alpha numeric characters when searching for a measure.
- Users may receive VSAC timeout errors, even when active in UMLS.
  - Work around: As this issue is intermittent, if a user receives an error indicating a 401 or VSAC timeout error when saving, users should follow these steps if this occurs. Copy the updates you were saving, navigate away from the tab, navigate back to the tab to paste the updates, and save again. [BONNIEMAT-1330](#)
- Measure export may fail when text fields include some symbols. Less than (<) and ampersand (&) symbols have been identified as causing export to fail if they are included, but additional symbols may have this effect as well. [BONNIEMAT-1429](#)

# MADiE Resources

## MADiE MVP

- The [MADiE MVP tab](#) on the MAT public web site provides:
  - Login button to MADiE
  - User Access Guide – how to get your MADiE account
  - User Guide – provides details regarding tool functionality
  - JSON Test Case Guide – steps for using the JSON test case editor
  - Known Issues – updated regularly
  - Release Notes – posted with each MADiE release
  - MADiE Measure Sharing Request Form v1.1 – to request measures and test cases be shared – submitted by the owner

# MADiE Resources (continued)

## MADiE QI-Core Profile Examples

- The MADiE team has created a measure in MADiE with an included test case JSON bundle which contains entries for many QI-Core (v4.1.1) profiles.
- The purpose of this test case JSON bundle is to provide users the framework for commonly used QI-Core v4.1.1 profiles that can be leveraged with their own test case development.
- The measure (**QI-Corev4.1.1 Test Case Template**) is a blank measure (no CQL and no Population Criteria) with one test case (**QI-Corev4.1.1 Example Bundle version 2**).
- The QI-Core profiles examples in the JSON bundle are for guidance and are not intended to fulfill any measure or testing requirement. Updates to reflect the specific details of your test case will be necessary.
- Measure developers may copy any of the profiles from the QI-Corev4.1.1 Example Bundle version 2 test case directly to your test case(s) or use a source code editor (e.g., Notepad++ and Visual Studio Code) and make any updates needed to meet your testing needs.
- The MADiE Test Case JSON Guide, available on the [MADiE MVP tab](#) of the MAT public website, has been updated with detailed information regarding the **QI-Corev4.1.1 Example Bundle version** test case in MADiE and provides additional guidance for using this resource to aid MADiE users in updating or creating test cases in MADiE.

# Updated Help Desk Ticket Submission Process

- The [MAT\\_Bonnie\\_MADiE\\_TicketSubmissionGuidance](#) document provides guidance to measure developers needing assistance with measures or test cases. This document includes the following:
  - Steps to take prior to submitting a Help Desk ticket
    - Review available documentation
    - Consult with SMEs
  - **A list of artifacts to include if a ticket is being created with either tracker for assistance with measure CQL or test case JSON**
    - Measure Export, Full measure CQL in a .txt file, full test case JSON in a .txt file
    - **Do not** send screen prints of partial CQL and/or JSON
  - The types of tickets to submit to the [CQL Issue Tracker](#)
    - Tickets submitted to the CQL Issue Tracker will be evaluated and the standards team may identify the ticket needs to be moved on to the Bonnie MAT MADiE Issue Tracker to evaluate MADiE, MAT and Bonnie functionality
  - The types of tickets to submit to the [Bonnie MAT MADiE Issue Tracker](#)

# Help Desk Tickets

## **The Labels field has been updated**

- **Labels**

- This field will now only be used by submitters to track labels important to the measure developers.
- If a label needs to be added to this field after the ticket has been created add a comment with the request and the MAT Bonnie MADiE team will make that update.

### **Help Desk Use Only Labels**

- This new field is only available to help desk staff after a ticket is created.
- The labels in this field will be used by the MAT Bonnie MADiE team.

## **JIRA Status and Resolution Use Cases**

- This document provides descriptions for each ONC JIRA status/resolution combination
- Available on the [Bonnie MAT Issue Tracker](#) Summary page
- <https://www.emeasuretool.cms.gov/sites/default/files/2023-05/JIRA%20Status%20and%20Resolution%20Use%20Cases.pdf>

# Help Desk Tickets (continued)

Two new fields will be used when an ONC JIRA ticket results in a MADiE release. One indicating that the release is complete, and the other that the issue is confirmed as resolved by the submitter.

## **MADiE Release Version**

- This new field is used by the help desk staff when a ticket resulted in an update to MADiE.
- The MADiE release(s) that included the update will be listed.
- If an issue requires multiple MADiE releases to fully resolve the issue, the Help Desk will add a comment to indicate a partial fix but will not complete the 'MADiE Release Version' field until the issue is fully resolved.

## **Submitter Resolution Confirmed**

- This new field will be used by submitters to indicate if the issue has been resolved after the MADiE Release.
- Submitters can confirm the issue is resolved by selecting 'Yes' from the radio button field, 'Submitter Resolution Confirmed'.
- If the submitter determines that the issue is not resolved, they should select 'No' from the radio button field and enter a comment in the ticket with their findings.
- The MADiE team will be notified of the update and if resolution is not confirmed will review the ticket and be in contact with the submitter.



# CQL Libraries

## Global Shared Libraries in MADiE:

Commonly used libraries were entered into MADiE following the MVP release.

FHIR Name in MAT	Version in MAT	QI-Core Name in MADiE	Version in MADiE
MATGlobalCommonFunctionsFHIR4	V 7.0.000	CQMCommon	V 1.1.000
FHIRCommon	V 1.1.000	FHIRCommon	V 4.2.000
FHIRHelpers	V 4.1.000	FHIRHelpers	V 4.2.000
QICoreCommon	V 1.0.000	QICoreCommon	V 1.3.000
CumulativeMedicationDurationFHIR4	V 1.4.000	CumulativeMedicationDuration	V 3.0.000
SupplementalDataElementsFHIR4	V 3.0.000	SupplementalDataElements	V 3.2.000

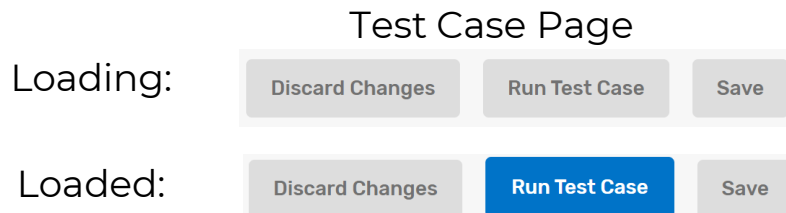
# CQL Libraries (continued)

## **CQL Libraries owned by MAT users:**

- Standalone CQL libraries for both FHIR and QDM will not transfer like measures.
- Library owners will need to create the shell library in MADiE with the correct model and then copy and paste the contents of the library from MAT into the library in MADiE.
- To ensure your library version number matches what was in MAT and used by your measure, users will need to major/minor version their library until the desired version number is reached.
- Reminder, versioned libraries cannot be deleted so version carefully.

# Loading Value Sets in MADiE

- MADiE utilizes a connection to VSAC when a user accesses the Test Case tab.
- For measures that contain a large number of value sets or value sets with large amounts of data, users may experience a delay in the Test Case table or a test case selected to view/edit fully loading.



- If a user interacts with the Test Case tab before it fully loads, they may receive the following error, "An error exists with the measure CQL, please review the CQL Editor tab".
- If there are no errors on the CQL, this error message can display when the value sets have not had time to load on the Test Case tab.
- Users should wait until all content is loaded and all buttons on the page are enabled.

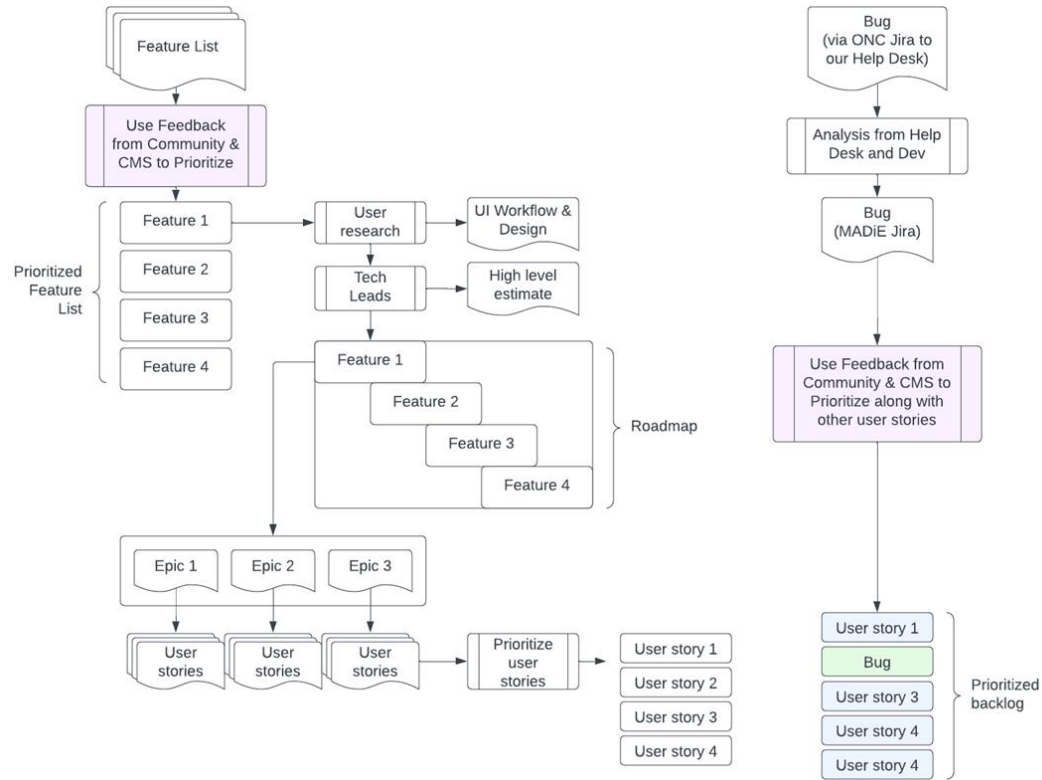
# Community Questions & Discussion

---

# User Group Discussion

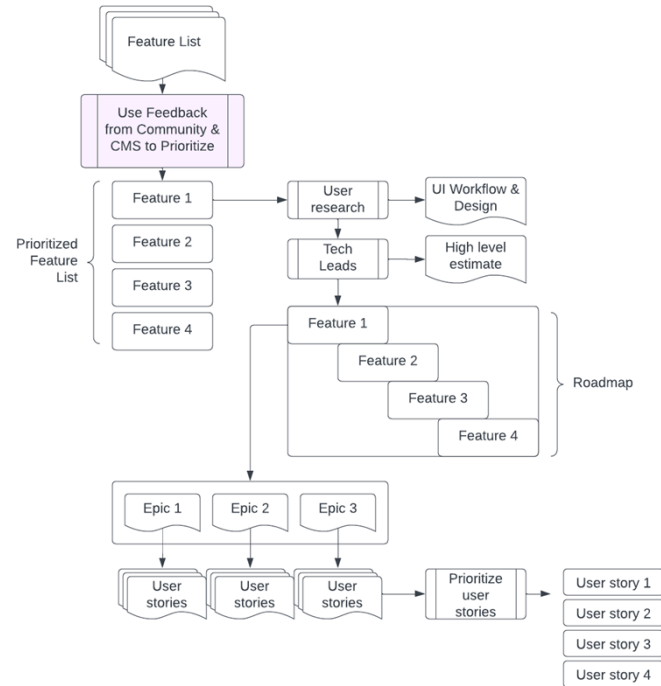
## BMAT Dev Team Process Overview

# Feature & Bug Lifecycle



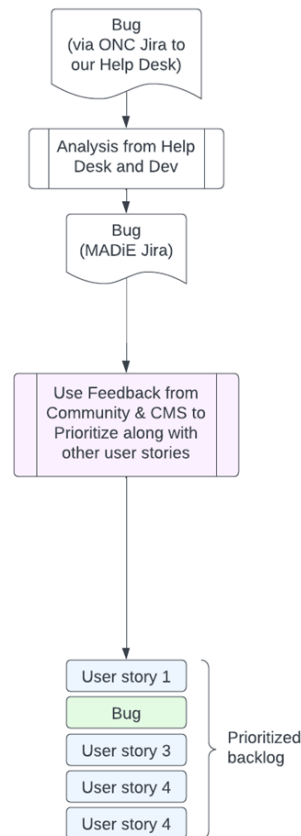
# Feature Lifecycle

- We have a list of features ([roadmap](#), [long term vision list](#), enhancement requests from help desk tickets, etc)
- Prioritize features (according to community feedback and CMS direction)
- Perform user research to solidify requirements and create our UI workflow and design (if needed)
- Work with tech leads to get high level estimate on level of effort
- Place on roadmap for graphical representation of our timeline and priorities
- Break the feature down into epics and user stories and prioritize the user stories so that the most important pieces are done first



# Bug Lifecycle

- We receive an issue (help desk ticket, community meeting, internal team, external team, stakeholder, etc)
- Create a Jira ticket and put it in the backlog
- Prioritize bug fix (according to community feedback and CMS direction)
- Jira ticket is analyzed for scope and priority and refined and prioritized within the list of work





# Implementation

- Walk through the user stories/bugs with the development team for grooming (we check for technical feasibility, ensure they have enough details to implement the requirements, and estimate the level of effort for each story)
    - Sometimes if technical research needs to be done before a requirement can be implemented, we will do a Spike – that is a timeboxed user story that allows a developer to do the necessary research. The spike will usually result in one or more additional user stories.
  - Using the size of user stories and the amount of work completed in prior sprints, we can determine how much work the team thinks they can accomplish in the next sprint.
  - We ensure the stories are prioritized according to what needs to be implemented next (business need coupled with technological and other constraints or dependencies)
  - Then we commit to a certain set of user stories in the next 2-week sprint
  - After the work is implemented and tested within that cycle, it is released a few days after the end of the sprint
- ★ Often, a full feature cannot be implemented in a single sprint so we will place the functionality behind a feature flag so that it is not actually available in production until the full feature is complete and we turn on the feature flag

# Agile Software Development Process

- PI Planning
- 2-week Sprints
- Releases

# PI Planning

- Share accomplishments from the last PI along with a system demo
- Share what the architecture/technical leads are working on
- Share what UX research and UI design is working on
- Share and discuss the objectives (goals) for the upcoming Program Increment (6 sprints - 12 weeks of work)
- Allow stakeholders to express any concerns and share feedback
- Document risks so they are mitigated or monitored through the PI

# 2-week Sprints

- Every 2 weeks we run through this cycle of planning out what we will do for the coming 2 weeks (sprint planning)
- We have daily standups for 15 minutes each day to ensure everyone is making progress with no impediments
- We have backlog grooming sessions every week where we review each user story with the team and the team understands and estimates the work required
- After each sprint (day 2 of the next sprint) we show off what we accomplished in the last sprint with a sprint review and demo
- Every sprint we have a retrospective to discuss what went well and how we could improve in an effort to help the team run as efficiently as possible and maintain a good morale

Monday	Tuesday	Wednesday	Thursday	Friday
		Sprint Day 1	Sprint Day 2	Sprint Day 3
		Sprint Planning Session Backlog Grooming	Daily Stand-up Sprint Review & Demo Retrospective	Daily Stand-up
Monday	Tuesday	Wednesday	Thursday	Friday
Sprint Day 4	Sprint Day 5	Sprint Day 6	Sprint Day 7	Sprint Day 8
Daily Stand-up Backlog Grooming	Daily Stand-up	Daily Stand-up Backlog Grooming	Daily Stand-up	Daily Stand-up
Monday	Tuesday	Wednesday	Thursday	Friday
Sprint Day 9	Sprint Day 10			
Daily Stand-up Backlog Grooming	Daily Stand-up			

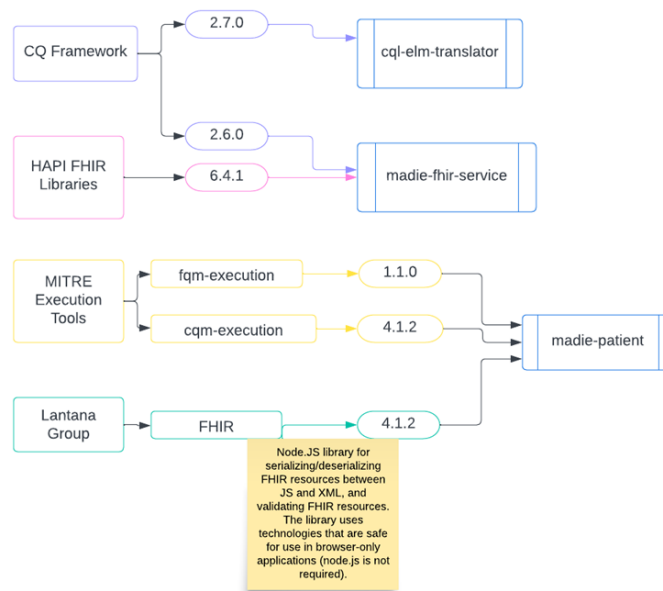
# Releases

- Sprint work is completed during the 2-week sprint
- Testing begins as user stories are completed during the 2-week sprint
- After the 2-week sprint is finished, QA finishes testing the stories from the sprint and performs a full regression test for all the sprint work
- After testing is complete, the code is packaged and prepared for release
- Release Communication:
  - The day before the release is deployed, an email is sent to all users, notifying them of the upcoming release
  - After the release is deployed, an email is sent to all users, notifying them the release is complete
  - Release notes, known issues, user guide and any other appropriate documentation is updated on the public website as well

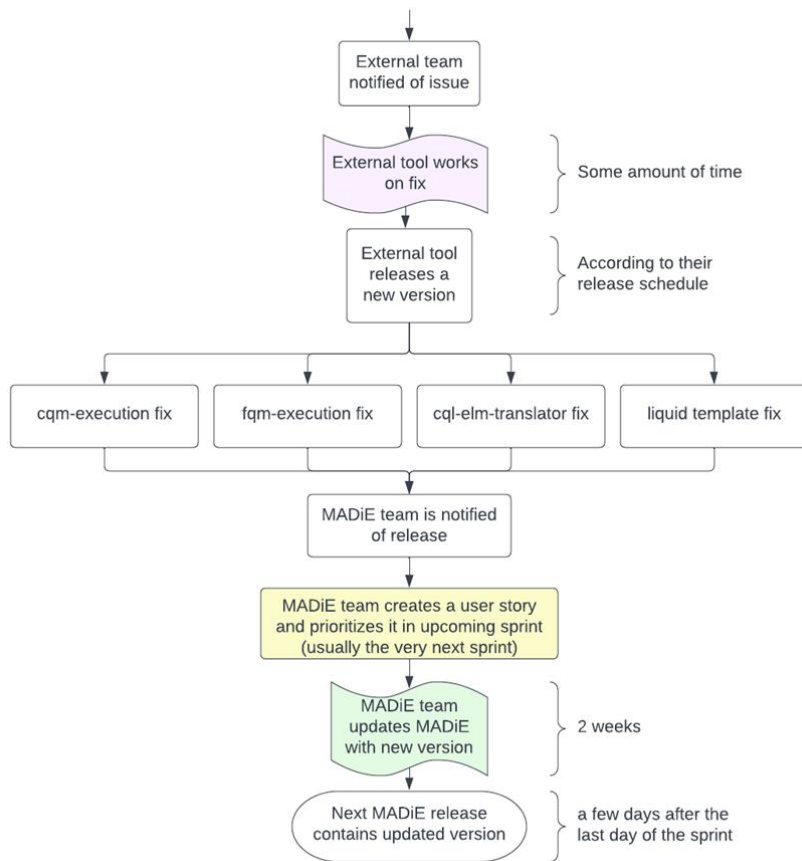
# MADiE External Dependencies

- MADiE has dependencies on several external tools

Tool	Function	Responsible Party
cqm-execution	<ul style="list-style-type: none"><li>• execution engine for eCQM</li><li>• does the test case calculations for QDM measures</li></ul>	MITRE
fqm-execution	<ul style="list-style-type: none"><li>• a wrapper around cqm-execution that provides FHIR capabilities</li><li>• does the test case calculations for FHIR/QI-Core measures, pass/fail highlighting, and coverage highlighting</li></ul>	MITRE
cql-elm-translator	<ul style="list-style-type: none"><li>• performs CQL validation when saving a measure</li><li>• translates CQL to ELM (which is needed for the calculation and export functionalities)</li></ul>	Bryn & team
liquid template	<ul style="list-style-type: none"><li>• used to dictate what's included in, and the format of, the FHIR human-readable export</li></ul>	Bryn & team



# How Dependencies work into our Process



# User Group Discussion (continued)

- Topic suggestions and questions for the User Group can also be submitted through the Bonnie MAT Issue Tracker located here:  
<https://oncprojecttracking.healthit.gov/support/projects/BONNIEMAT/summary>
- Additional questions or comments can be submitted by using the chat feature or unmuting your own line.



# Reminder when submitting tickets...

## MAT Tickets

- Indicate the tool type and Measure Model: QDM vs. FHIR
- Attach the measure package if appropriate
- Provide Screenshots of error messages

## Bonnie Tickets

- Be sure to indicate tool type: Prior, QDM, FHIR
- Attach the affected test cases and reference them in the ticket by name if possible
- Attach the measure package used with the test cases
- Provide which account was used to test the measure(s)

## MADiE Tickets

- ONC Jira is now updated to reflect MADiE
- All measure sharing requests or inquiries with a HARP ID must be submitted via email at [semanticbits-madie-help@icf.com](mailto:semanticbits-madie-help@icf.com)
- Questions about updating measure CQL or test case JSON to resolve validation errors or unexpected actual results should be submitted to the CQL Issue Tracker. If after CQL or JSON updates are identified and resolved questions/issues remain the ticket will be moved to the MADiE team for review.
- Attach the measure package and affected CQL and test case JSON, if appropriate, as text files and reference them in the ticket by name

# Resources

---

# PHI/ PII

- PHI and PII are prohibited in MAT, Bonnie or MADiE.
- Measure testing should only represent synthetic patient test data.
- Report any questions or concerns to the Help Desk.



# Resources for Users

## **Bonnie and MAT Troubleshooting Guides**

- Located on the ONC Jira Bonnie MAT Issue Tracker – Summary page
  - [Bonnie Troubleshooting Guide](#)
  - [MAT Troubleshooting Guide](#)

## **Tool Release Table**

- Located on the MAT public website under Training and Resources/MAT Helpful Links
  - [Bonnie, MAT and MADiE Release Schedule](#)

## **Negation Rationale in Bonnie FHIR**

- Located on the MAT public website under Training and Resources/Bonnie Helpful Links
  - [Bonnie FHIR: How to use Negation Rationale](#)

# Resources

MAT Public Website:

<https://www.emeasuretool.cms.gov/>

MAT 6.10:

<https://www.emeasuretool.cms.gov/MeasureAuthoringTool/Login.html>

Bonnie 4.3.1 QDM (Prior) (QDM version 5.5):

<https://bonnie-prior.healthit.gov/>

Bonnie 5.1.2 QDM (QDM version 5.6):

<https://bonnie.healthit.gov/>

Bonnie 6.2.5 FHIR:

<https://bonnie-fhir.healthit.gov/>

MADiE MVP – 1.1.6

<https://madie.cms.gov>

Bonnie MAT MADiE Issue Tracker:

<https://oncprojecttracking.healthit.gov/support/projects/BONNIEMAT/summary>

eCQI Resource Center:

<https://ecqi.healthit.gov/>